

**Are you ready for the Parade of Lights 2019?
Thank you for registering!**



Friday, November 29th

1

Line up starts at 4:00 and you **MUST** be lined up by 5:00. Line up is along College Ave, in the right lane starting at the Old Manor Building (see map below)

2

There is a designated drop off area for children, located at the Old Manor Building (see map below). If you have a float with children it is important that you arrive on time to ensure that your float is ready for

little ones when they are dropped off.
Parents should enter the Old Manor parking lot via Ash or Maple Street.

3

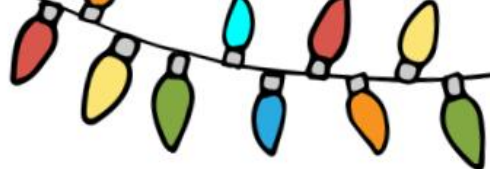
The is no pre-determined order to the parade, so you will be placed in the order that you arrive.

4

You are welcome to bring candy, but if you do it **MUST** be handed directly to spectators. It is very dangerous to have children running into the parade route to collect candy on the ground. Unfortunately, if we see candy being thrown you will not be able to participate again next year. We must be very strict with this to keep everyone safe!

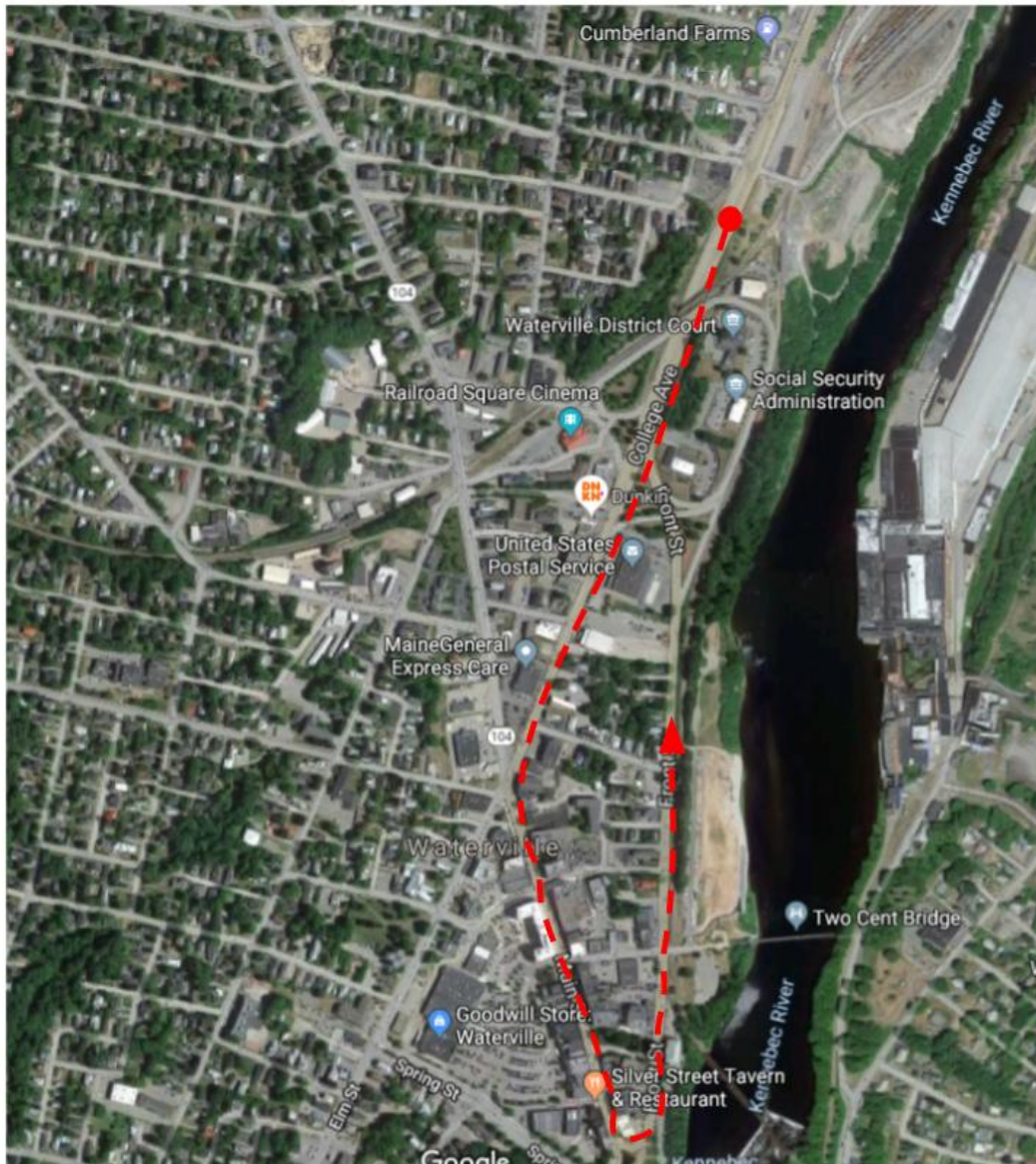
**Help us spread the word:
Parking Ban on Main Street Starts at 3:00
Main Street will close at 4:30**

If you have any questions, please email
amarinda@childrensdiscoverymuseum.org



2019 Parade Route

This year, the parade will line up along College Ave on the right lane, starting at the Old Manor building. The parade will follow along College Ave, travel down Main Street, wrap around to Front Street, and dissipate past the Head of Falls. Santa will finish at Castonguay Square.





The Parade will line up along the right lane of College Ave. Only parade floats will be allowed to park along the lineup.

Children may be dropped off in the parking lot of the Old Manor building to be walked down to their float.

Children's Discovery Museum | 207-622-2209
|amarinda@childrensdiscoverymuseum.org| kringleville.org

Connect with us

